

Dear Customer,

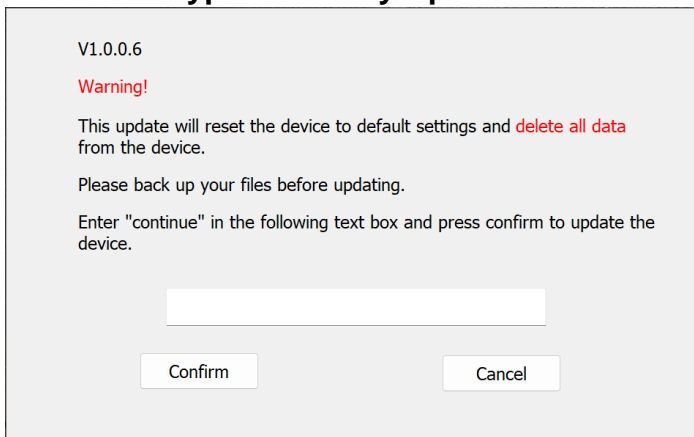
to update your Verbatim Keypad Security Device please follow below steps.

Updating Tool only for Windows!

Important notice!

Please back up your data prior to executing the security update, as during the update process your device will be initialized and all data stored on the device will be lost!

1. Download the Update Tool from our Website.
2. Unpack the downloaded ZIP file.
3. Connect the device to your PC and unlock it.
4. Start the **"Keypad Security Update 1.0.0.6.EXE"**



V1.0.0.6

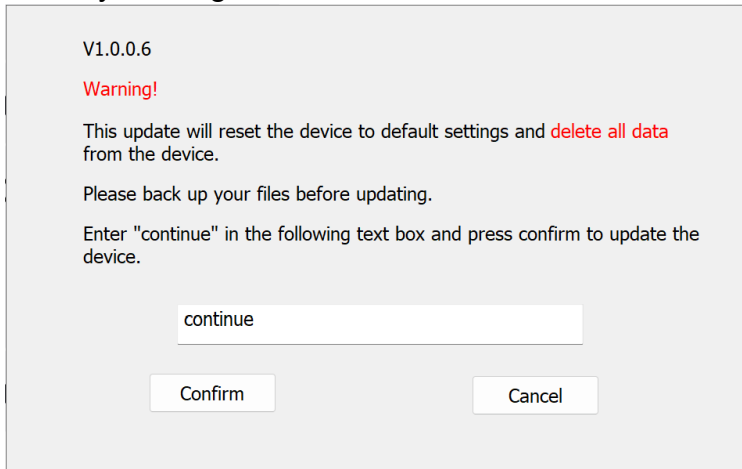
Warning!

This update will reset the device to default settings and **delete all data** from the device.

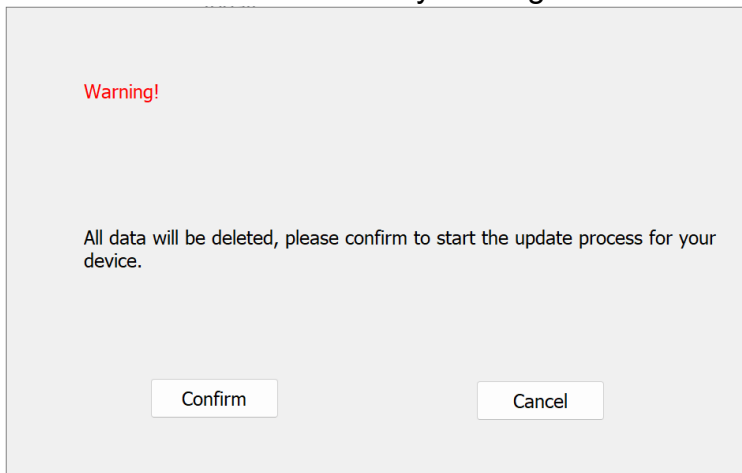
Please back up your files before updating.

Enter "continue" in the following text box and press confirm to update the device.

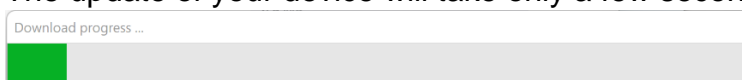
5. Type **"continue"** into the text box and confirm to forward in the updating process by clicking **"Confirm"**.



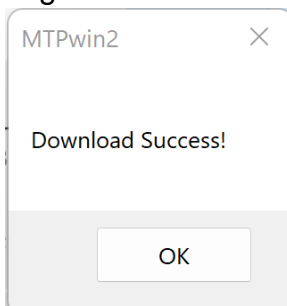
6. Reconfirm the next window by clicking **"Confirm"**.



7. The update of your device will take only a few seconds.



8. After successfully updating your device, you will get below confirmation message.

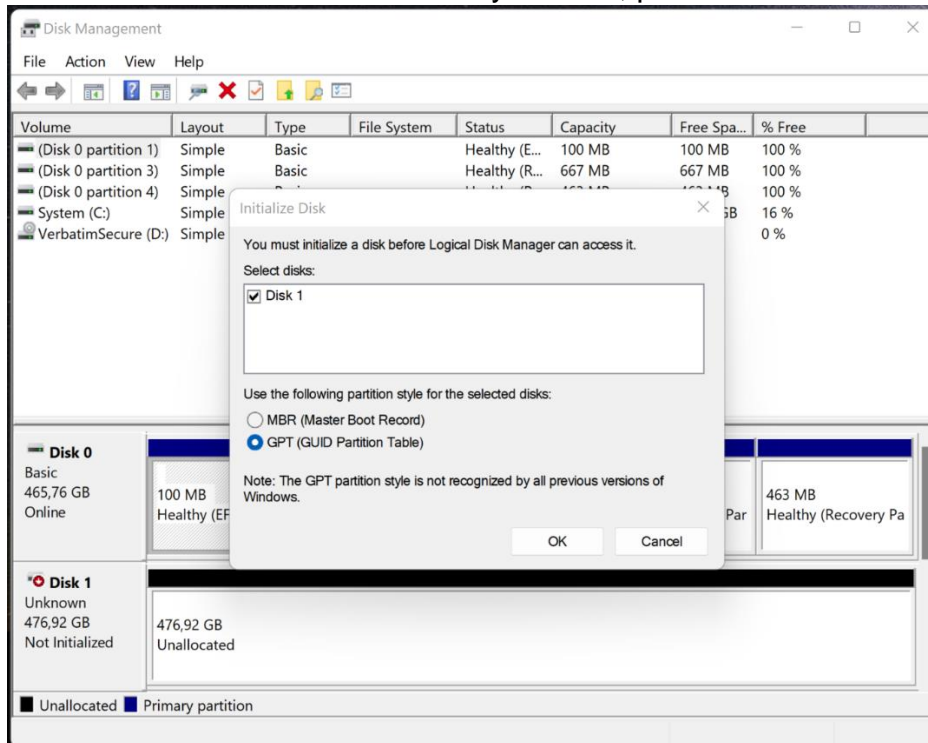


9. Please unplug and plug in your device to finish the updating process.
10. During the update process your device was initialized, you will have to set a new PIN-Code.

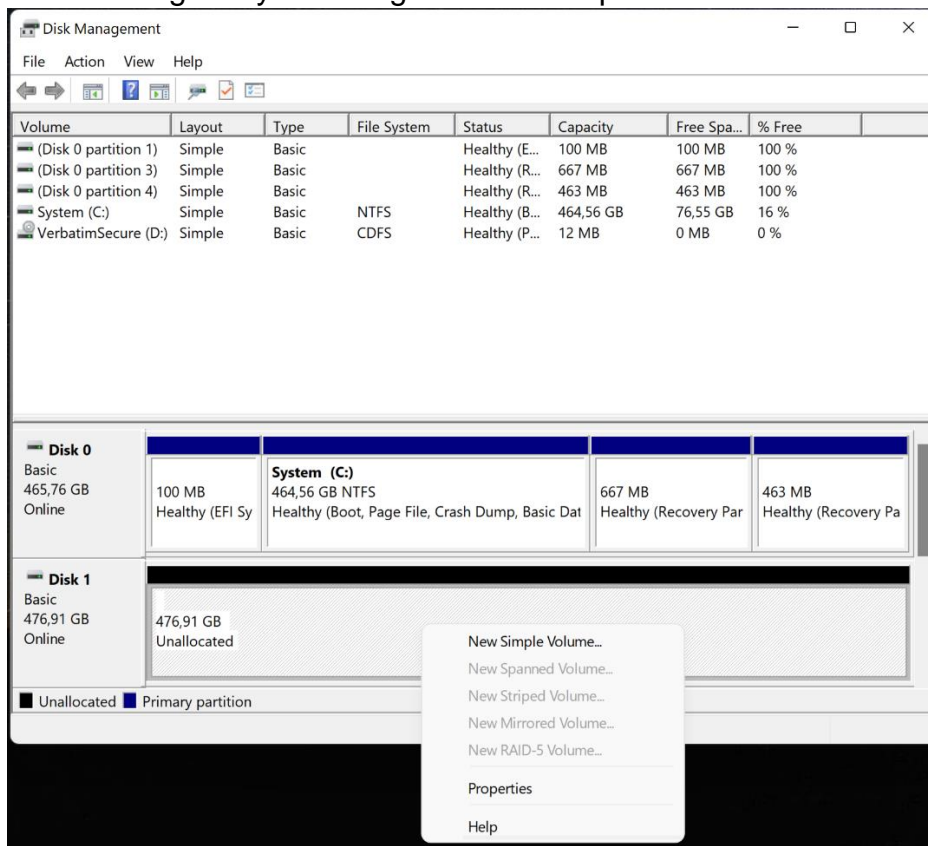
11. To set a new PIN please hold keys 1 and 2 when connecting the device until the red status LED turns on.
12. Now hold the “Lock”-Key for about 5 seconds until the orange LED turns on.
13. Now please enter your new PIN with a minimum of 5 and a maximum of 12 digits and confirm by pressing the “Unlock”-Key. The orange LED will turn off.
14. Please reenter your new PIN and confirm by pressing the “Unlock”-key, your device will now be unlocked.
15. The encrypted drive is now unlocked but was initialized during the update process. To repartition and format the drive please follow below steps. **You will need administrator rights for the next steps to open the disk management.**
16. Right click on your Windows start button and select “**Disk Management**”.



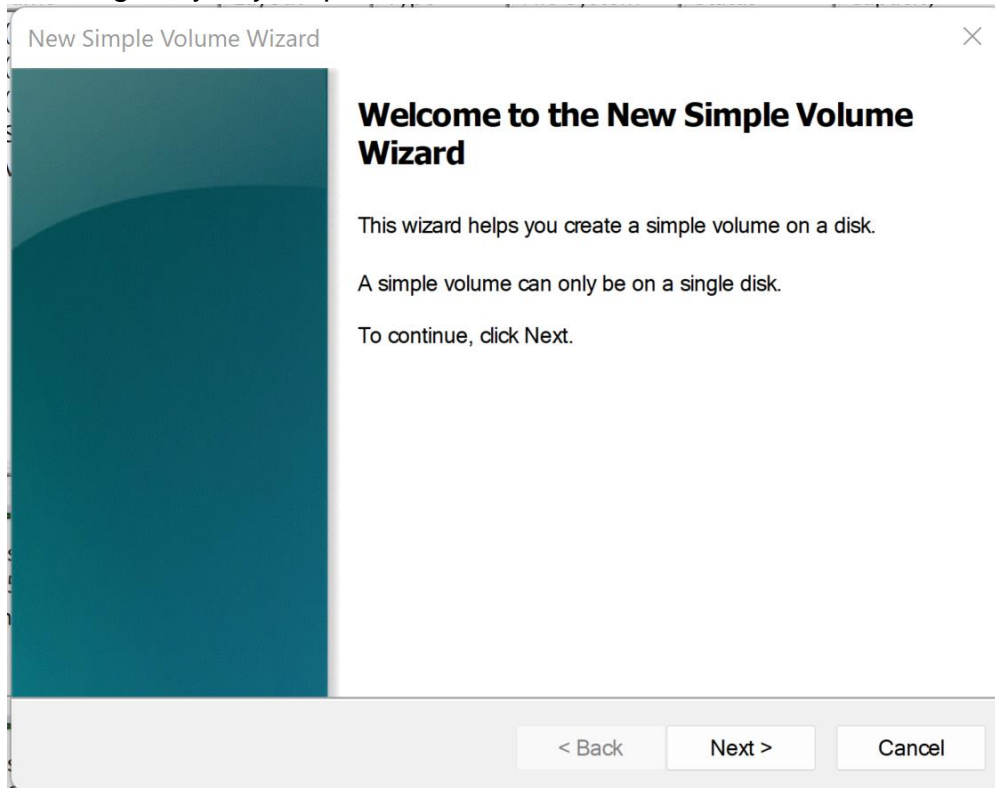
17. You will now be asked to initialize your disk, please confirm with “OK”.



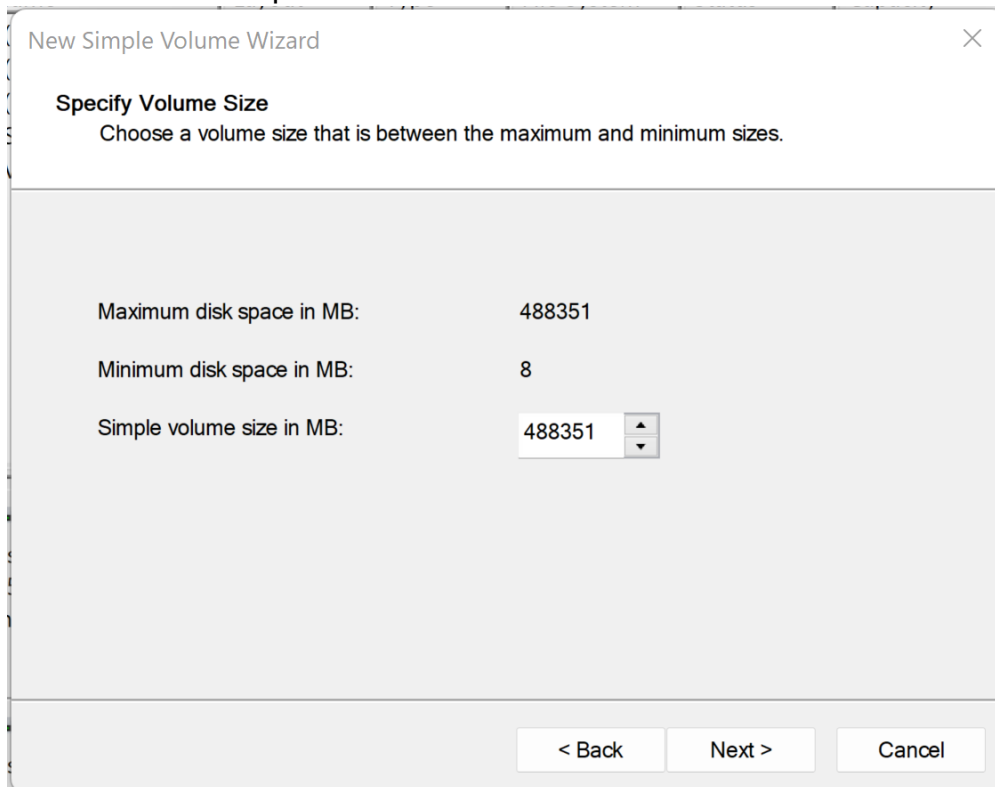
18. Right click on the unallocated drive and setup a “New Simple Volume” and a Wizard will guide you through the next steps.



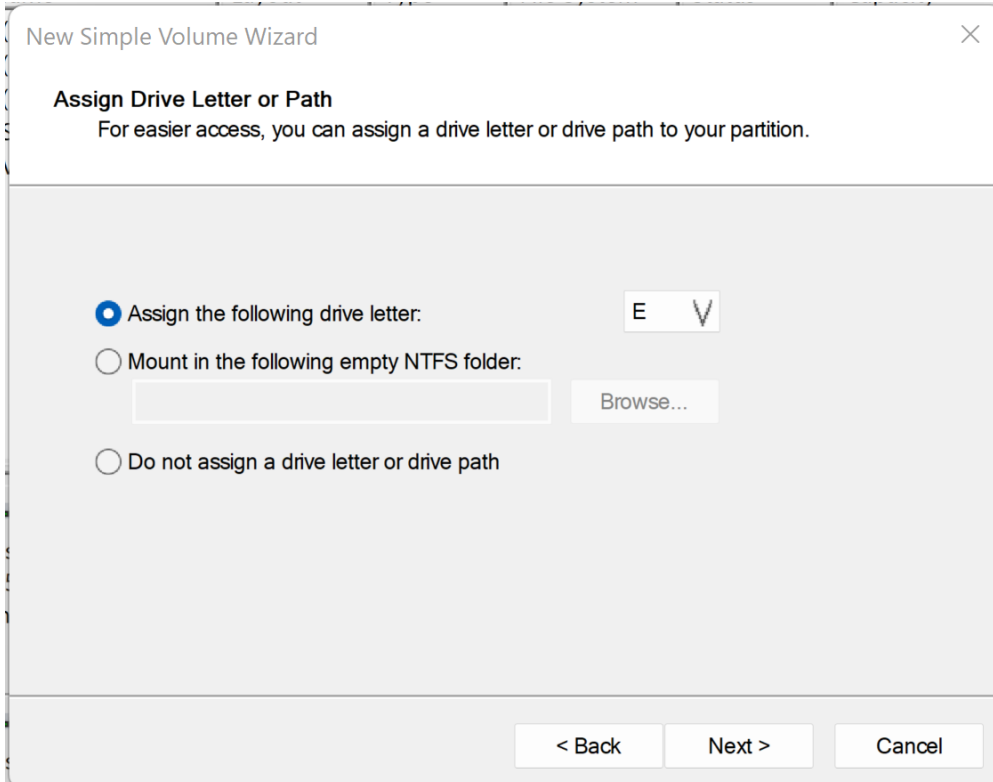
19. Please confirm with **“Next”**. You can keep all default settings unless you want to change any to your preferences.



20. Set the size of the partition and confirm with **“Next”**.



21. Assign a drive letter and confirm with “**Next**”



New Simple Volume Wizard

Assign Drive Letter or Path
For easier access, you can assign a drive letter or drive path to your partition.

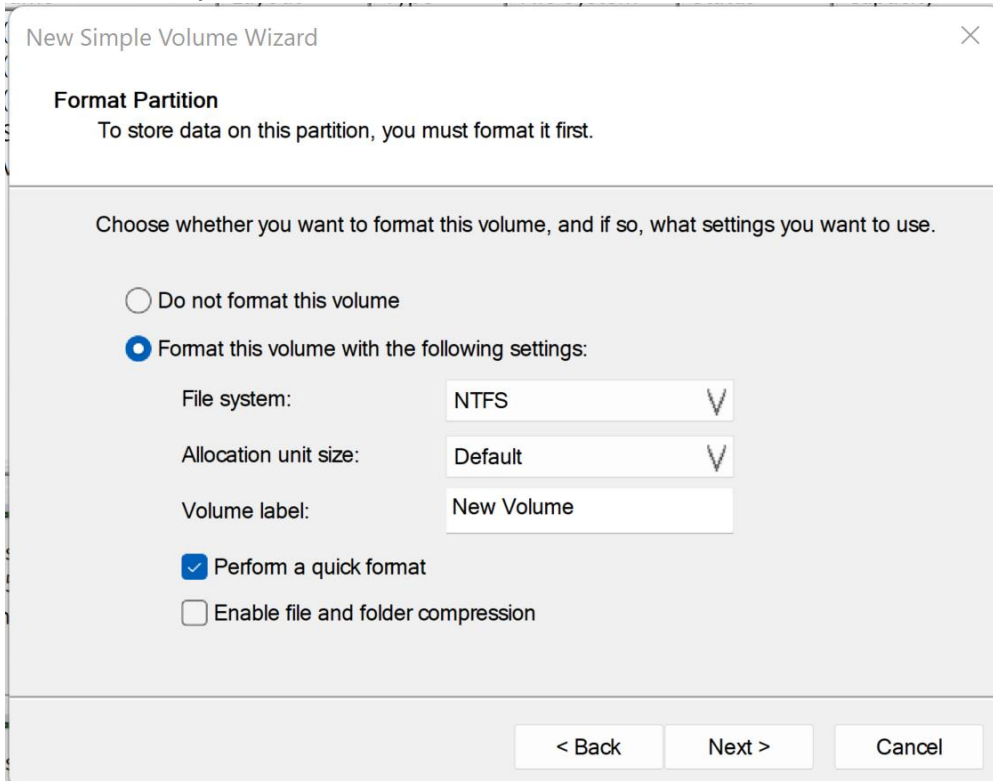
☒ Assign the following drive letter: E V

☐ Mount in the following empty NTFS folder:
 Browse...

☐ Do not assign a drive letter or drive path

< Back Next > Cancel

22. Confirm the options to format the drive with “**Next**”.



New Simple Volume Wizard

Format Partition
To store data on this partition, you must format it first.

Choose whether you want to format this volume, and if so, what settings you want to use.

☐ Do not format this volume

☒ Format this volume with the following settings:

File system: NTFS V

Allocation unit size: Default V

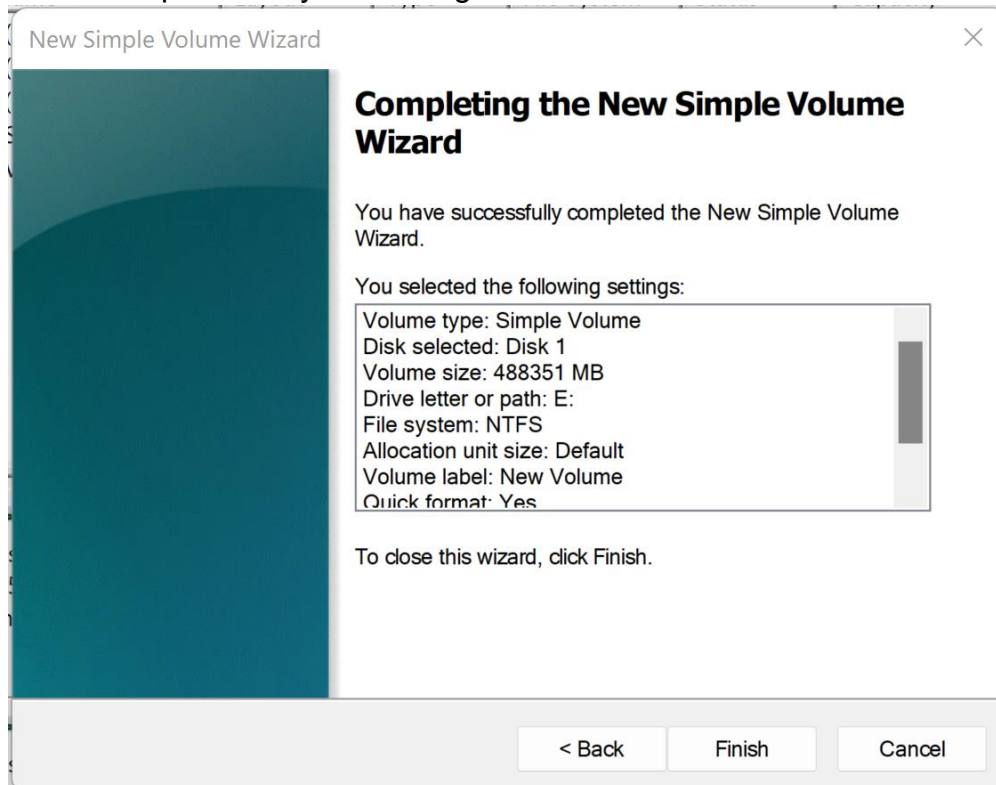
Volume label: New Volume

☒ Perform a quick format

☐ Enable file and folder compression

< Back Next > Cancel

23. Finish this process by confirming with **“Finish”**



24. Your device has now been formatted and is ready to use.

