

User Manual

Contents

2	Quick start
4	Controls
4	Accessories
5	Minimum System Requirements
5	Battery Charge
5	Power On/Off
6	LCM Indicator
7	LED Indicator
7	WEB CAM driver
9	eDVR Create
12	DirectCap
13	Win98 driver
13	WebCam
14	USB Storage
14	Taking a Picture
14	Audio Clip Capture
15	Movie Clip Capture
15	Setting
15	Format
16	Troubleshooting
16	License Information

Quick Start Guide

To get started follow steps as shown.

1. Install WEB CAM driver and Application

Insert the supplied installation CD into the computer's CD-ROM drive. Click **WEB CAM driver** button and click the **eDVR Create** button to install the **eDVR Create** application for file transferring.

2. Charging

Charge up your 5 in1 Store'n'Go about 2.5 hours before using it. Turn on your computer and connect the 5 in1 Store'n'Go to your computer. It will begin to charge the battery.

3. WebCam Mode

Hold the mode button and plug 5 in1 Store'n'Go into USB till a 'BEEP' is heard and **CR** is displayed.

Caution You must install WebCam Driver before using it.

4. Transferring files to your PC

Connect 5 in1 Store'n'Go to your computer's USB port to transfer your files.

Caution Do not unplug the 5 in1 Store'n'Go during file transferring.

5. Taking Pictures, Recording Audio and Movie Clips

Press **Power** to turn on 5 in1 Store'n'Go. Press the **Mode** button to change operating mode.

dc Displayed = **Digital Camera** -Press **Snap** button to take a picture. When you take a picture, LCM will show **99 - 01** to indicate the percentage of the free memory.

Rc Displayed = **Audio Clip Recorder** -Press **Snap** button to record an audio clip and press **Snap** button to stop it.

dv Displayed = **Digital Video Recorder** -Press **Snap** button to record movie and press **Snap** button again to stop it.

St Displayed = **Settings** -Change HI or Lo setting by pressing **Snap** button.

Ft Displayed = **Format** -Press **Snap** button and ready for formatting.

Lo will flash, then press **Snap** button to format.

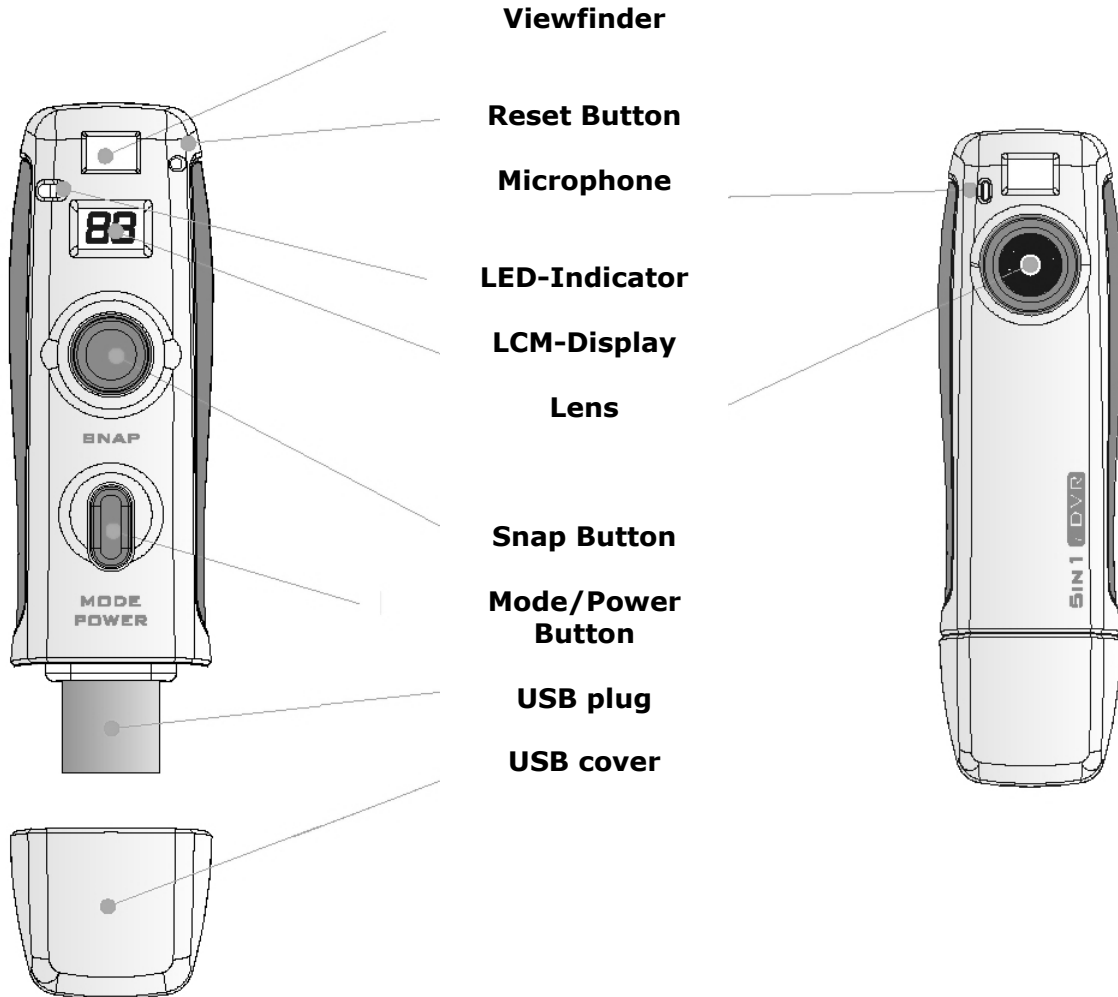
Ft will flash.

Lb Displayed -Meaning low battery. The machine will beeps then turn itself off.

Caution 5 in1 Store'n'Go uses FAT(FAT16) as internal file system. Don't format to the other types.

Caution Our product adopts the latest Multimedia technology; please make sure to update your system to the latest Microsoft Media Player 9.0. You can download them from the Microsoft website: <http://www.microsoft.com/windows/windowsmedia/9series/player.asp> or you can use your Internet Explorer and from the menu '**Windows Update**' to check them on line.

Controls



Accessories

- 5 in1 Store'n'Go x 1
- CD x 1
- Necklace x 1
- USB Extension x 1
- Quick Start Guide x 1

WebCam Mode

IBM PC or compatible

Microsoft Win98SE (install USB driver), Wine, Win2000, Wimp OS with DirectX 8.1 or later.

Graphics Adapter capable of 800x600 resolution, 64k colours.

Pentium II 266, with 64M RAM (Win98/ME) or 128M RAM (Win2K/XP)

Pen Drive mode

IBM PC or compatible

Microsoft Win98SE, WinME, Win2000, WinXP Operating System.

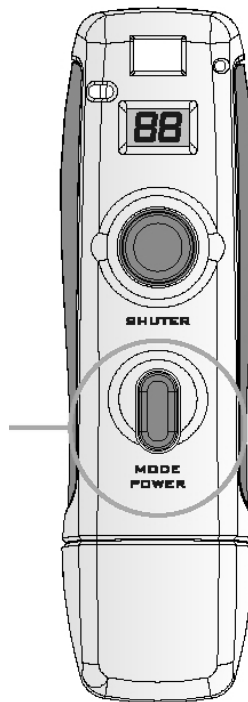
Your 5 in1 Store'n'Go is powered by a built-in USB rechargeable lithium battery which you can charge directly from your computer.

TIP Charging your 5 in1 Store'n'Go for 2.5 hours before using it.

Power On Press power/mode button to turn on your 5 in1 Store'n'Go.

Power Off It will turn off automatically after 30 seconds.

Mode/Power Button



LCM Display

dc Digital Camera Mode

Ac Audio Clips Mode

du Movie Clips Mode

St Setting Mode

Ft Format Mode

Co Confirm

Hi Hi Setting

Lo Low Setting

99 indicates percentage of free memory(99% free memory)

Hd Flash Storage Mode

CR WebCam Mode

do Transfer Data Out

di Transfer Data In

Lb Low Battery

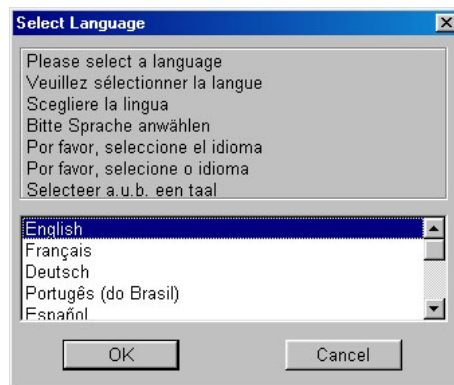
LEDColour	Description
AMBER	Taking a Movie Clip
YELLOW	Taking a Audio Clip
GREEN	Taking a picture
BLANK	Format Mode

Webcam Driver

- 1 Insert **CD** into your CD-ROM drive, setup menu will be launched automatically or you can double click Setup.exe to launch the setup program.



2. Click **WEB CAM Driver** button to install the driver.
3. Please select your language.



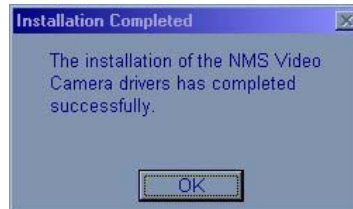
4. Please click **ok** button to continue to install the driver.



5. Please click **continue anyway** button to continue to install the driver.



6. After the WebCam driver install completed, please click **Ok** button to finish.

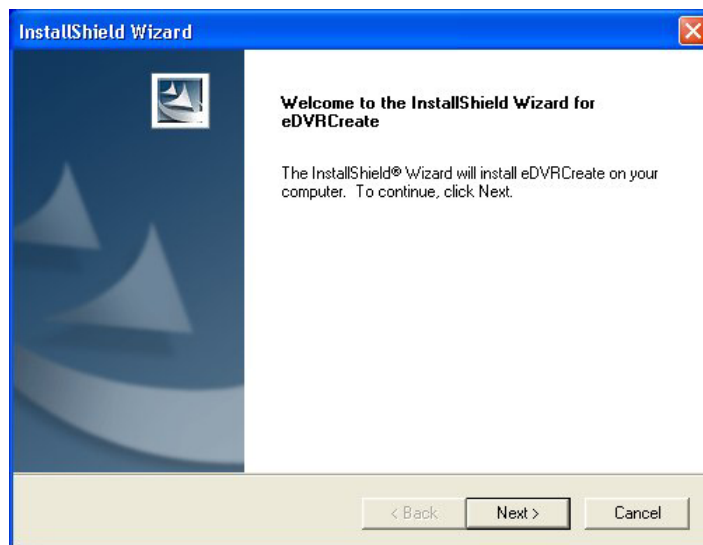


eDVR Create

1. Insert **CD** into your CD-ROM drive and setup menu will be launched automatically. Click **eDVR Create** button.



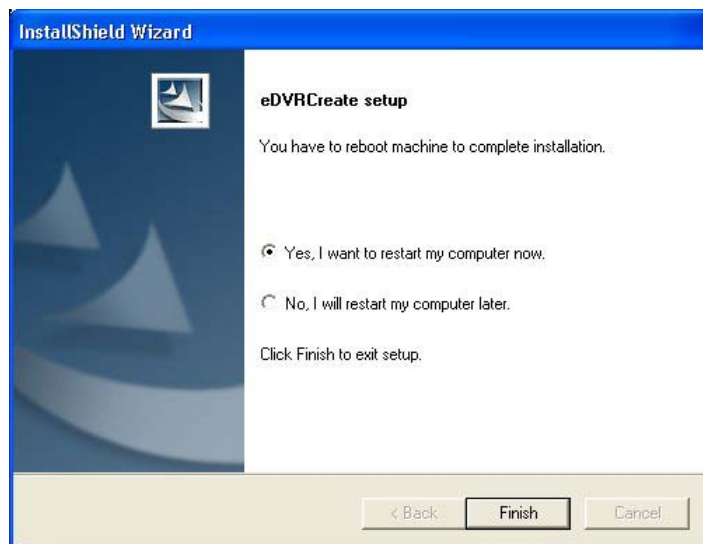
2. Please follow the instruction to install **eDVR Create** application.



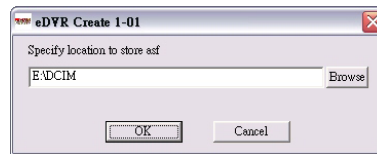
3. Choose 'I accept the agreement' to update DirectX.



4. Click **Finish** button to restart your computer.



5. Once you have installed eDVR Create application, you can double click the **STJ** file and system will transfer **STJ** file to **ASF** file and save **ASF** file to the folder you choose.



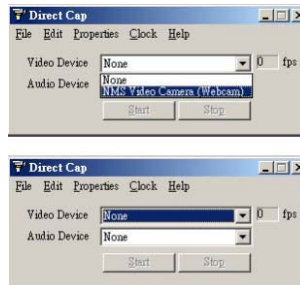
Caution If you cannot play **ASF** file by Microsoft MediaPlayer, please connect to Internet and Microsoft MediaPlayer will update automatically.

DirectCap Create

1. Insert **CD** into your CD-ROM drive and setup menu will be launched automatically. Click **DirectCap** button.



2. Please follow the instruction to install **DirectCap** application.
3. To start streaming video, select 'NMS Video camera (Webcam)' from the pull down menu under **Video Device** then press the **Start** button. To stop, press the **Stop** button.



To start streaming audio, select your own device from the pull down menu under **Audio Device** then press the **Start** button. To stop, press the **Stop** button.

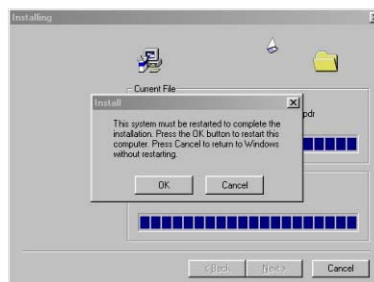
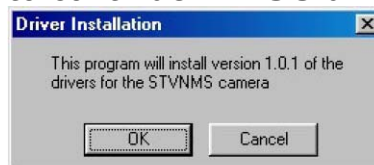
Video and audio may be streamed simultaneously, but the 'preview' shows a short time lag for audio. When streaming to file, the time lag does not occur.

Win98 Driver

1. Insert **CD** into your CD-ROM drive and setup menu will be launched automatically. Click **Win98 driver** button.



2. Please follow the instruction to install **Win98 driver** application.
3. Press **ok** button to continue **Win98 driver** installation.



4. Press **ok** button to restart your computer.

Webcam Mode

1. Holding **Power/Mode** button and plug 5 in1 Store'n'Go into USB port.
2. The user must hold **Power/Mode** button till a long 'BEEP' beeps.

Note WEB CAM mode requires the driver installed to provide the video functionality.

USB Storage Mode

1. Connect 5 in1 Store'n'Go to your computer USB port
2. *Hd* displayed.

Note For file transfer, *do* (data out) will **flash** when the computer reads files, *di* (data in) will flash when it writes files.

Caution Do not remove the 5 in1 Store'n'Go from USB port when transferring data.

Taking a Picture

1. Press **Power/Mode** button to turn on your 5 in1 Store'n'Go.
2. It will 'beep' once and *dc* will be displayed on the LCM.
3. To take your picture. Keep your 5 in1 Store'n'Go steady and press **Snap** button to capture and store your pictures.

Note

Hi is default setting as VGA (640x480) resolution.

Lo is setting as QVGA (320x240) resolution.

Audio Clip Recorder

1. Press **Power/Mode** button to change to **Recording Mode**.
2. *Rc* will be displayed on the LCM.
3. Press **Snap** button to record an audio clip and press **Snap** button to stop it.

Note

Hi is default setting as 11KHz at audio sample rate

Lo is setting as 8KHz at audio sample rate

Digital Video Recorder

1. Press **Power/Mode** button to change to **du** mode.
2. **du** will be displayed on the LCM.
3. Press **Snap** button to record a movie clip and press **Snap** button to stop it.

Note

Movie clips recorded in **du** mode are stored in a proprietary file format with the filename extension **STJ**. The application (eDVR Create) is to convert this file. Please install the required Directx8.1 (or latest version) and Microsoft media player9.0 (or later version) for playback.

Hi is default setting as 30 FPS and 11KHz at audio sample rate.

Lo is setting as 15 FPS and 8KHz at audio sample rate.

Quality Setting

1. Press **Power/Mode** button to change to **St** mode
2. **St** will be displayed on the LCM.
3. Change **Hi** or **Lo** setting by pressing **Snap** button.

Format

1. Press **Power/Mode** button to change to **Ft** mode.
2. **Ft** will be displayed on the LCM.
3. Press **Snap** button for format warning.
4. **Co** will flash on display.
5. Press **Snap** button to confirm formatting.
6. **Ft** Flashing to indicate being formatting.

Caution 5 in1 Store'n'Go **ONLY** supports **FAT(FAT16)** file system, please set format in **FAT(FAT16)** if you format by OS.

Troubleshooting

1. If you operate 5 in1 Store'n'Go in an improper way, it will cause 5 in1 Store'n'Go to freeze .please press the reset button to reset the device.
2. If you format 5 in1 Store'n'Go using fat32 or NTFS file system, it will cause the device to stop functioning. Please format your 5 in1 Store'n'Go in FAT (FAT16) file system.
3. Please install Win98 driver before using 5 in1 Store'n'Go on Windows 98 operation system.
4. Be sure you have directX 8.1 or above to play movie clips that you record.
5. If you cannot play **ASF** file by Microsoft MediaPlayer, please connect to Internet and Microsoft MediaPlayer will update automatically.

Caution Our product adopts the latest Multimedia technology; please make sure to update your system to the latest Microsoft Media Player 9.0. You can download them from the Microsoft website:

<http://www.microsoft.com/windows/windowsmedia/9series/player.aspx> or you can use your Internet Explorer and from the menu 'Windows Update' to check them on line.

Copyright Information

Win98SE, WinME, Win2000, WinXP, DirectX 8.1 are registered trademarks of Microsoft Corporation.